



**REGIONAL SPECIALISED METEOROLOGICAL CENTRE-TROPICAL CYCLONES, NEW DELHI
TROPICAL WEATHER OUTLOOK**

DEMS-RSMC TROPICAL CYCLONES NEW DELHI DATED 04.11.2021

TROPICAL WEATHER OUTLOOK FOR NORTH INDIAN OCEAN (THE BAY OF BENGAL OF BENGAL OF BENGAL AND ARABIAN SEA) VALID FOR NEXT 120 HOURS ISSUED AT 0600 UTC OF 04.11.2021 BASED ON 0300 UTC OF 04.11.2021.

BAY OF BENGAL:

SCATTERED LOW AND MEDIUM CLOUDS WITH EMBEDDED INTENSE TO VERY INTENSE CONVECTION LAY OVER WESTCENTRAL AND SOUTHWEST BAY OF BENGAL. SCATTERED LOW AND MEDIUM CLOUDS WITH EMBEDDED MODERATE TO INTENSE CONVECTION LAY OVER NORTH BAY OF BENGAL AND SOUTH ANDAMAN SEA.

PROBABILITY OF CYCLOGENESIS (FORMATION OF DEPRESSION) DURING NEXT 120 HRS:

24 HOURS	24-48 HOURS	48-72 HOURS	72-96 HOURS	96-120 HOURS
NIL	NIL	NIL	NIL	NIL

ARABIAN SEA:

YESTERDAY'S LOW PRESSURE AREA OVER LAKSHADWEEP AREA & ADJOINING SOUTHEAST ARABIAN SEA LAY OVER SOUTHEAST ARABIAN SEA AND ADJOINING LAKSHADWEEP AREA AT 0300 UTC OF TODAY, THE 4TH NOVEMBER, 2021. ASSOCIATED CYCLONIC CIRCULATION EXTENDS UPTO 4.5 KM ABOVE MEAN SEA LEVEL. IT IS LIKELY TO MOVE NORTH-NORTHWESTWARDS AND BECOME MORE MARKED OVER EASTCENTRAL ARABIAN SEA DURING NEXT 48 HOURS.

AS PER SATELLITE IMAGERY AT 0300 UTC, LOW PRESSURE AREA LAY OVER SOUTHEAST ARABIAN SEA ADJOINING LAKSHADWEEP AREA AND NEIGHBOURHOOD. ASSOCIATED SCATTERED TO BROKEN LOW AND MEDIUM CLOUDS WITH EMBEDDED INTENSE TO VERY INTENSE CONVECTION LAY OVER EASTCENTRAL SOUTHEAST ARABIAN SEA & NEIGHBOURHOOD AND MODERATE TO INTENSE CONVECTION OVER LAKSHADWEEP.

SCATTERED LOW AND MEDIUM CLOUDS WITH EMBEDDED INTENSE TO VERY INTENSE CONVECTION LAY OVER EASTCENTRAL ADJOINING SOUTHEAST ARABIAN SEA & COMORIN REGION AND MODERATE TO INTENSE CONVECTION LAY OVER SOUTHWEST ARABIAN SEA.

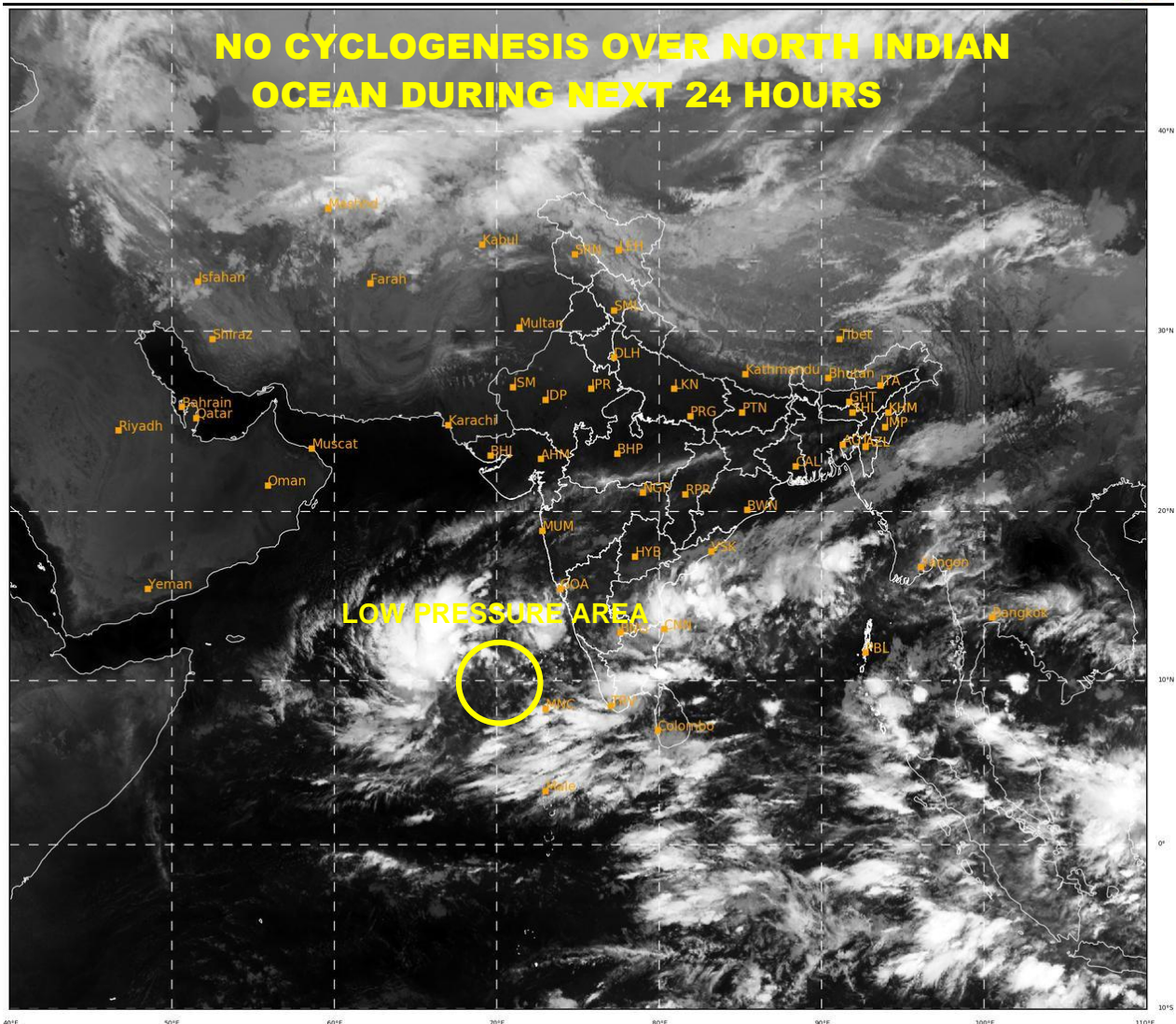
PROBABILITY OF CYCLOGENESIS (FORMATION OF DEPRESSION) DURING NEXT 120 HRS:

24 HOURS	24-48 HOURS	48-72 HOURS	72-96 HOURS	96-120 HOURS
NIL	NIL	NIL	LOW	LOW

REMARKS: THE CONVECTIVELY ACTIVE PHASE OF MADDEN JULIAN OSCILLATION IS CURRENTLY IN PHASE 2, WITH AMPLITUDE LESS THAN 1. IT IS LIKELY TO PROPAGATE FURTHER EASTWARDS & MOVE ACROSS PHASE 3 AND REACH PHASE 4 BY 6TH NOVEMBER WITH AMPLITUDE REMAINING LESS THAN 1. IT WILL CONTINUE IN PHASE 4 FOR SUBSEQUENT 3 DAYS. HENCE MJO WILL SUPPORT ENHANCEMENT OF CONVECTIVE ACTIVITY OVER THE NORTH INDIAN OCEAN DURING THE NEXT 5 DAYS. THE SEA SURFACE TEMPERATURE (28-29°C) AND OCEAN THERMAL ENERGY OVER SOUTHEAST & EAST-CENTRAL AS ARE FAVOURABLE TO SUPPORT CONVECTION. VERTICAL WIND SHEAR IS LOW TO MODERATE (10-15 KNOTS) OVER SOUTHEAST & ADJOINING EAST-CENTRAL AS AND THE SHEAR TENDENCY IS NEUTRAL OVER THE REGION. THE LOW LEVEL CONVERGENCE IS $5-10 \times 10^{-5} \text{ S}^{-1}$ WHICH IS SUPERPOSED BY AN UPPER LEVEL DIVERGENCE OF ARE 2 DISTINCT REGIONS OF VERTICALLY COUPLED LOW LEVEL CONVERGENCE & UPPER LEVEL DIVERGENCE $10-20 \times 10^{-5} \text{ S}^{-1}$ OVER SOUTHEAST & ADJOINING EAST-CENTRAL ARABIAN SEA. THERE IS A CYCLONIC VORTICITY FIELD ($60-70 \times 10^{-6} \text{ S}^{-1}$) EXTENDING UPTO MID-TROPOSPHERIC LEVELS OVER SOUTHEAST AS WITH WESTWARD TILT WITH HEIGHT. THE UPPER TROPOSPHERIC RIDGE PASSES ROUGHLY ALONG LAT. 14°N OVER THE AS. WHILE MOST OF THE NUMERICAL MODELS ARE SUGGESTING THAT THE PRESET LOW PRESSURE AREA COULD MOVE NORTH-WEST OR NORTH-NORTHWESTWARD WITHOUT MUCH INTENSIFICATION OVER EASTERN AS, ONLY A FEW OF THEM LIKE NCUM GROUP OF MODELS ARE SUGGESTING LIKELY NORTH-NORTHWESTWARD MOVEMENT & INTENSIFICATION OF THE CURRENT LOW PRESSURE AREA INTO A DEPRESSION & HIGHER INTENSITY FROM 7TH NOV. ONWARDS.

SAT : INSAT-3D IMG
 IMG_TIR1 10.8 um
 L1C Mercator

04-11-2021/(0300 to 0326) GMT
 04-11-2021/(0830 to 0856) IST



520

935

IMD, DELHI